

IB-TR3000 Thermostat Instructions (Part I)

ver 1.2

Buttons and LCD display			
Button / Icon	Description	Button / Icon	Description
	Turning on/off thermostat	AUTO	Auto mode
	Menu button / Program button		Vacation mode
	Set the time and week days		Manual override
	Increase the set value		Frost protection activated
	Decrease the set value	SET	Set temperature
	The buttons are locked.	PROG#	Programmes number
	Heating is turned on	ROOM	Room temperature
	The difference between set temperature and room temperature, more bars means more difference	FLOOR	Floor temperature
			Economy temperature
			Comfort temperature

General Settings

Press button to Turn on/off the thermostat. When thermostat is turned off, the LCD will only display current room temperature. When the thermostat is turned off, press and hold button M for 3 seconds to bring up a configuration menu. In this mode, press button M to cycle the thermostat through the available setting menus.

Menu #	Features description	Features Explanation	Adjustment (press up or down button to adjust)
1	Model (model selection)	This thermostat is a combination model allowing you to choose between 3 different models. A, AF and F model. A model: air only, with built in sensor AF model: air & floor, with both built in and remote sensor F model: floor only, with remote sensor	A, AF, F
2	Sd (switching differential)	The numbers of degree difference before switching. The default is 1°C which means the thermostat will switch the heating on 0.5°C below the set temperature and will turn it off 0.5°C above the set temperature. With a 2°C differential, the heating will switch on 1°C below the set temperature and will switch off 1°C above the set temperature.	1 = 1 degree(default), 1.5 = 1.5 degrees.....
3	ATC (air temp calibrate)	This is to calibrate air temperature if required.	-1 = decrease 1 degree, 1 = increase 1 degree...
4	FTC (floor temp calibrate)	This is to calibrate floor temperature if required.	-1 = decrease 1 degree, 1 = increase 1 degree...
5	PTD (program time delay)	This gives more time for user to set the programmes before reverting back to standard display	5s, 10s, 15s, 20s (default), 25s, 30s.
6	TR-AF (AF model only) (TR= Temp readout)	This gives option to choose to show air temperature, floor temperature or to show both floor & air in interval.	A= to show air temperature, F= to show floor temperature, A-F = to show both in 5 second intervals
7	MAXFT (set maximum floor temp in AF model)	This is to protect the floor surface.	40 degree(default)
8	BL (backlight turning-on time setting)	This is to set the backlight turning-on time. User can also set the backlight always on or off.	30 seconds(default) On= always on, OFF= always off
9	TF (temperature format)	This allows users to select between °C or °F.	°C or °F
10	CLOCK	12/24 HOUR clock system selection	24 (default), 12- hour or 24-hour clock system

Remarks:

1. Not all menus are visible in certain models. For example, if you set the thermostat to A or F model, menu 6 and menu 7 will not be visible.

	<p>Please Note: one of the following error messages will appear if one of these problems occur:</p> <p>LO - This error means that the room or floor temperature is below 0°C</p> <p>HI - This error means that the room or floor temperature is greater than 50°C</p> <p>If the floor sensor is short-circuit or broken, the LCD will display "Err" and the thermostat will cut off output.</p>
	This product should be installed by a qualified electrician.

See overleaf for further setting up information

IB-TR3000 Thermostat Instructions (Part II)



Programme your 4 daily events

Follow easy steps below,

1	Press and hold button 2 (the M button) for 5 seconds to show program mode and day selection set all days the same, press and hold arrow down button for 5 seconds. To select an individual day press the arrow up or down in succession until the desired day is shown.
2	Press button 2 to bring up the first set point (PROG#1). Use the up and down arrow to set time for comfort level (default 07:00)
3	Press button 2 again and use the up and down arrow to select temperature (default 22 °C)
4	Press Button 2 again to show set point 2 (economy mode) . Use the up and down arrows to set economy time (default 9:30)
5	Press button 2 again and use the up and down arrows to select temperature (default 16 °C)
6	Press Button 2 again to show set point 3 (comfort mode). Use the up and down arrows to set comfort time (default 16:30)
7	Press button 2 again and use the up and down arrow to select temperature (default 22 °C)
8	Press Button 2 again to show set point 4 (economy mode) . Use the up and down arrows to set economy time(default 22:30)
9	Press button 2 again and use the up and down arrows to select temperature (default 16 °C)
10	Press button 2 to accept



Lock the buttons

To lock the buttons, press and hold the up and down arrow buttons simultaneously for 3 seconds, to unlock the buttons, press and hold the up and down arrow buttons simultaneously again.



Vacation mode

To set vacation mode press and hold up arrow button for 3 seconds, use same procedure to exit this mode.

Vacation mode will maintain a set temperature (default 10 deg C) all the time. Press up or down button to change the set point.



Reset to Factory setting

In standby mode(when thermostat is turned off), press and hold button 2 and 3 for 3 seconds to reset the thermostat fully to the configuration it left the factory. (there will be a RESET appearing for 5 seconds)



View floor temperature

If thermostat is set in AF model, and set to show air temperature only, press and hold down arrow button for 3 seconds, floor temperature will be displayed and it will automatically revert back to air temperature after 5 seconds.



Manual temperature override

When the up button is pressed the set temperature is increased and when the down button is pressed the set temperature is decreased and thermostat will maintain the new set temperature until the next set point(comfort level). To cancel the override setting, just press and hold button 3 for 3 seconds.



Setting the clock and day of the week

This thermostat is fitted with a real time clock. It is essential that the clock time and day are set accurately if you require your programmed events to start on time. Follow below easy steps,

- 1) Press button 3 once and the time will flash
- 2) Use the up and down arrow to change the time
- 3) Press button 3 again, the day of the week will flash
- 4) Use the up and down arrows to change the day
- 5) Press button 3 again to accept

Installation and Wiring

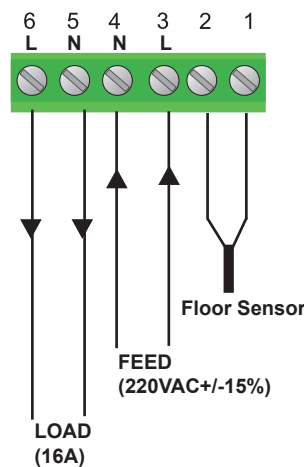
Carefully separate the front half of the thermostat from the back plate by placing a small flat head terminal driver into the slots on the bottom face of the thermostat.

Carefully unplug the ribbon connector which is plugged in to the front half of the thermostat.

Place the thermostat front half somewhere safe. Terminate the thermostat as shown in the diagrams below.

Screw the thermostat back plate on to the back box

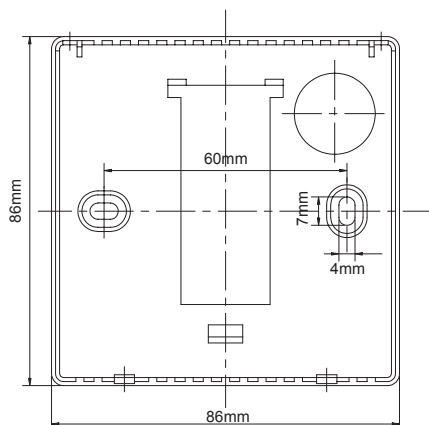
Re-connect the thermostat ribbon cable and clip the two halves together.



16 Amp
3500 WATTS



This product should be installed by a qualified electrician.



Dimensions

